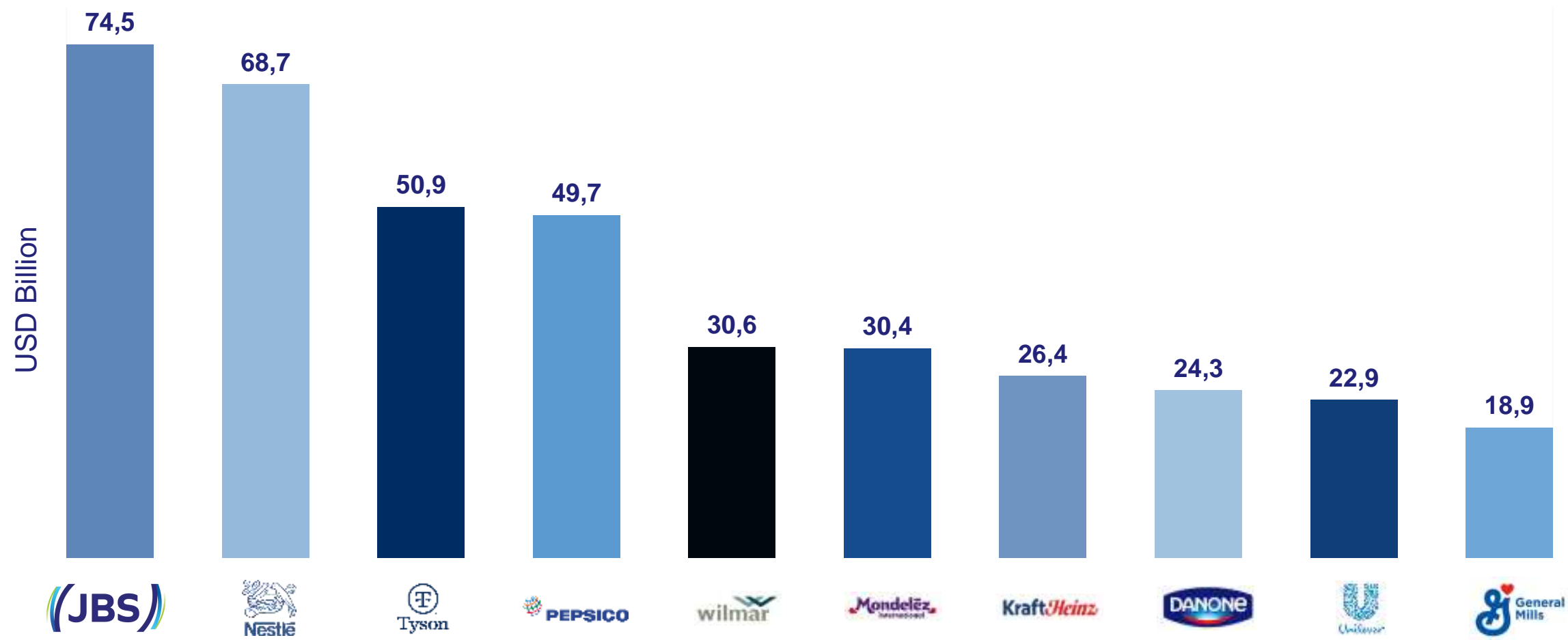




GLOBAL RANKING:

GLOBAL LEADER IN FOOD (REVENUE)



Source: JBS, Forbes and Bloomberg, based on the net revenue of foods in USD billion in the fiscal year of 2022
Remark 1: Does not include the beverage business

GLOBAL LEADER IN FOOD

MARKET LEADER



**#1 GLOBAL
BEEF
PRODUCTION**



**#1 GLOBAL
BIRD
PRODUCTION**



**#2 GLOBAL
SWINE
PRODUCTION**

NEW AVENUES OF GROWTH



AQUACULTURE

#2 Australia salmon producer.



**PREPARED
FOOD**

#2 of the prepared food market in Brazil

#1 position of the prepared food market in the United Kingdom

#1 position of the prepared food market in Australia and New Zealand



**ALTERNATIVE AND
PLANT-BASED PROTEIN
BUSINESS**

#1 *greatest Brazilian producer of plant-based products*

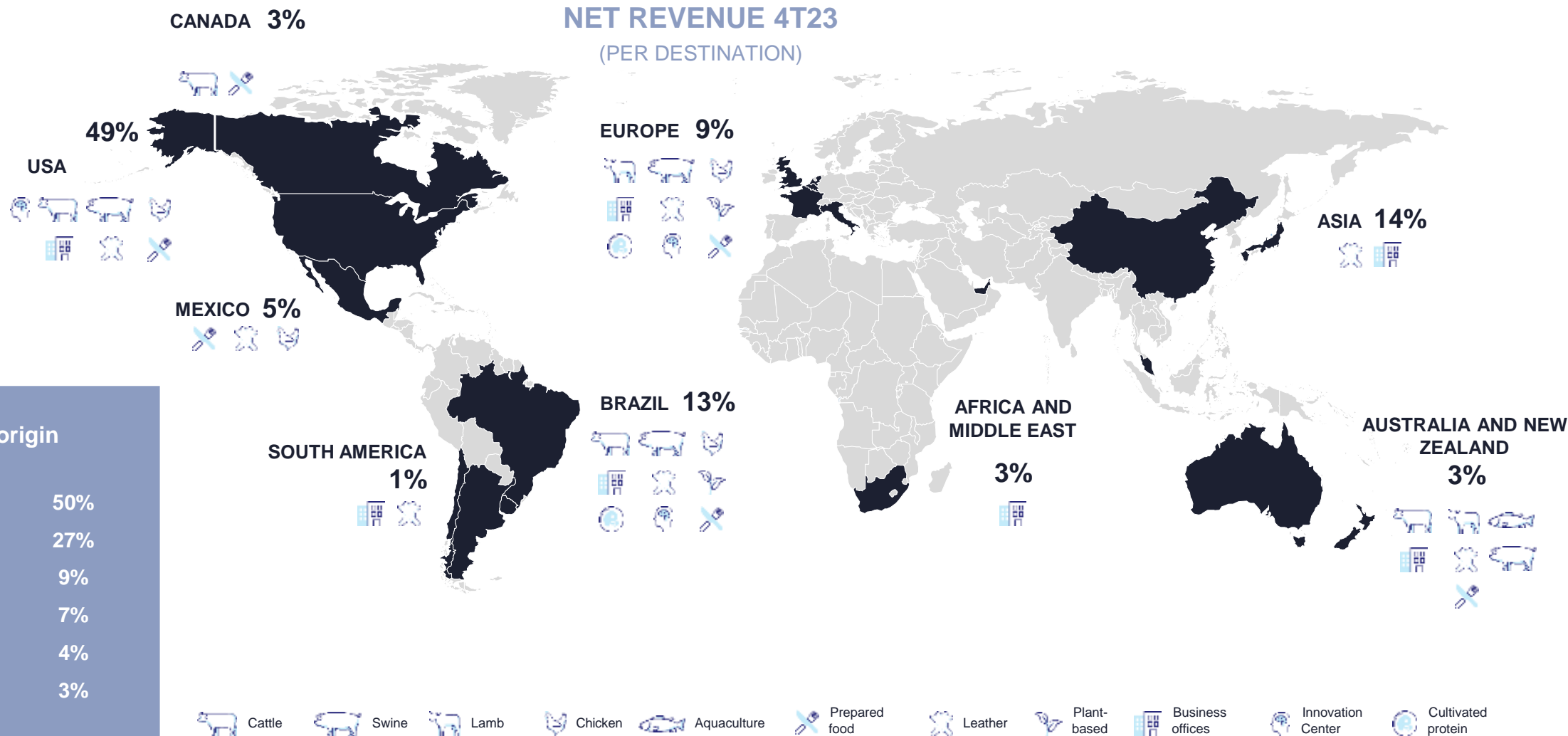
#3 *European producer of plant-based proteins*

The construction work of an industrial plant to produce cultivated protein is in progress

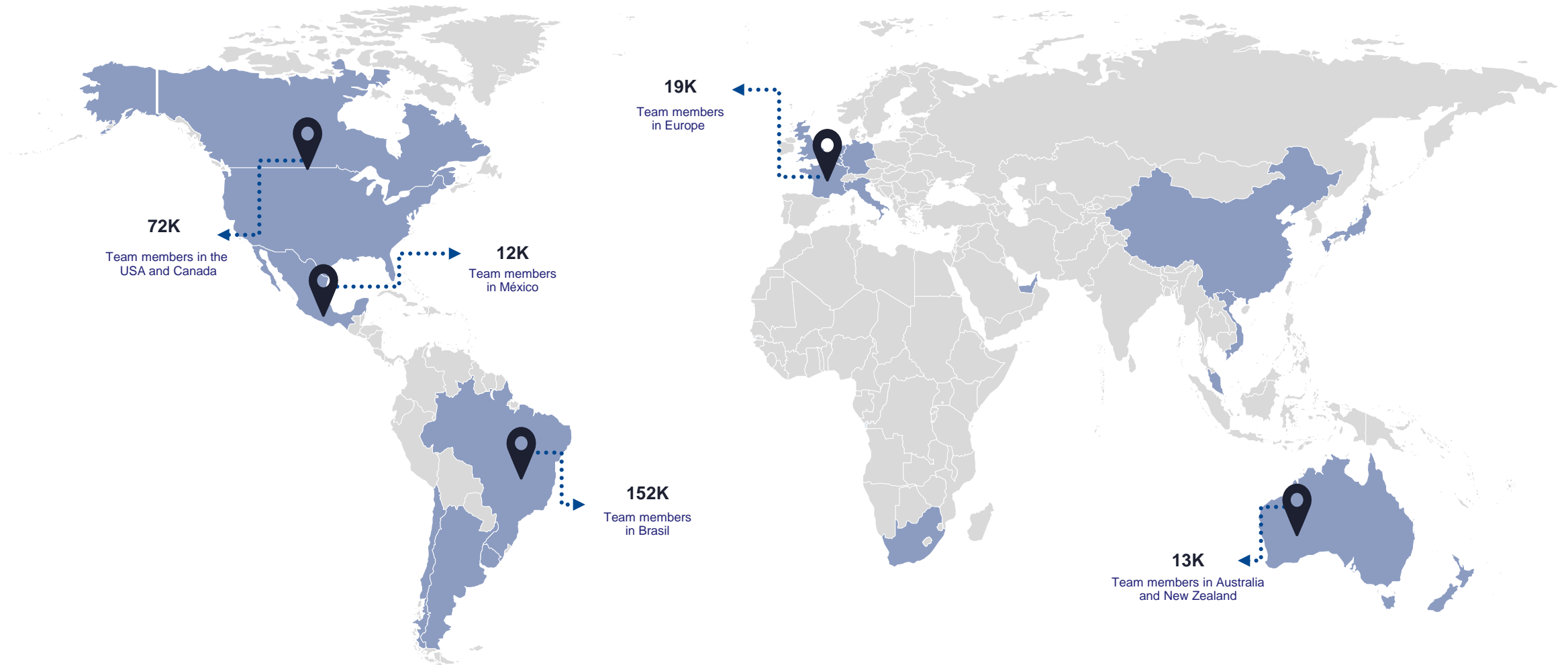


STRATEGY

GEOGRAPHIC AND PROTEIN DIVERSIFICATION



MORE THAN 270.000 EMPLOYEES IN THE WORLD



GREATEST EMPLOYER OF BRAZIL: **MORE THAN 152.000 TEAM MEMBERS.**

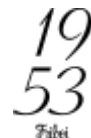
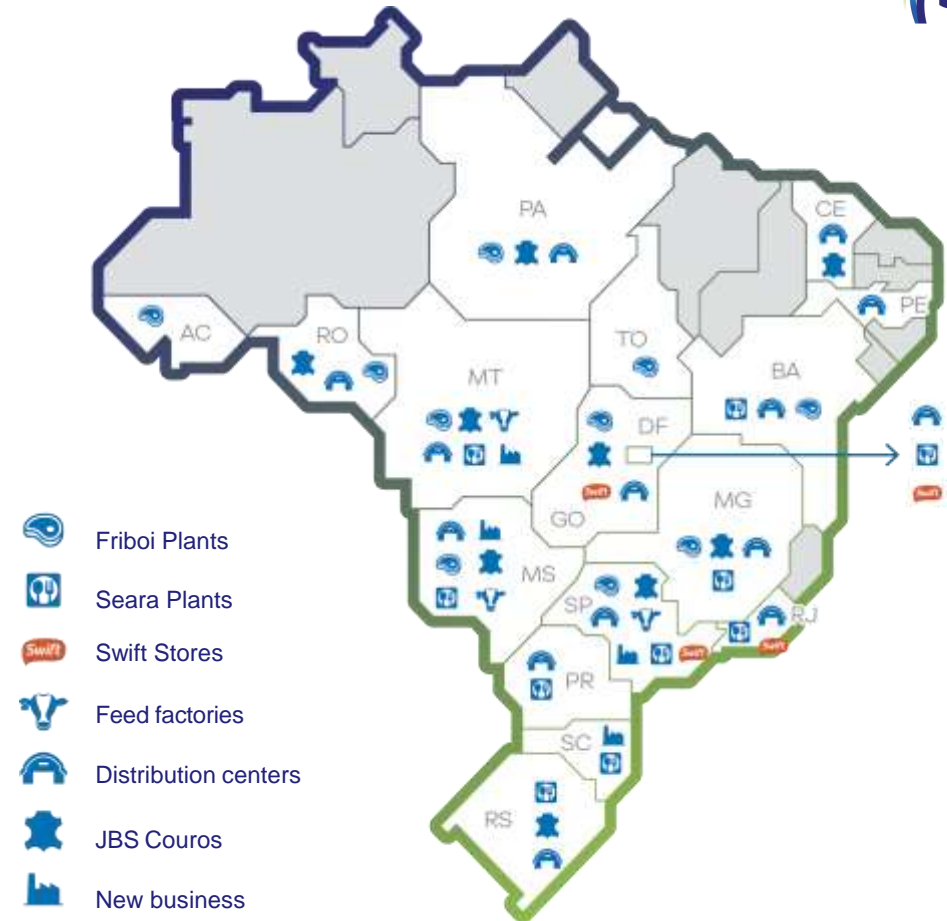
ADDED VALUE: DIVERSIFIED PORTFOLIO OF DE BRANDS IN THE WORLD



(JBS)

JBS IN BRASIL

- 152 THOUSAND EMPLOYEES
- 128 PLANTS AND 31 DISTRIBUTION CENTERS
- R\$ 8 BILLION INVESTED IN BRAZIL FROM 2020 TO 2024



JBS REPRESENTS 2.1% OF GDP OF BRAZIL,
SAYS THE BRAZILIAN INSTITUTE FIPE

BRL 350,3
bi

JBS OPERATION

BRL 70 bi

Is the total value of the production of JBL operations, such as factories and offices

Suppliers
BRL 49,9 bi

Includes the economic sectors directly affected by JBS operations, such as supply suppliers.

E.g.: cattle breeders, grain suppliers, transportation companies, power plants and all types of supplies needed for food production.

Suppliers' suppliers
BRL 98,8 bi

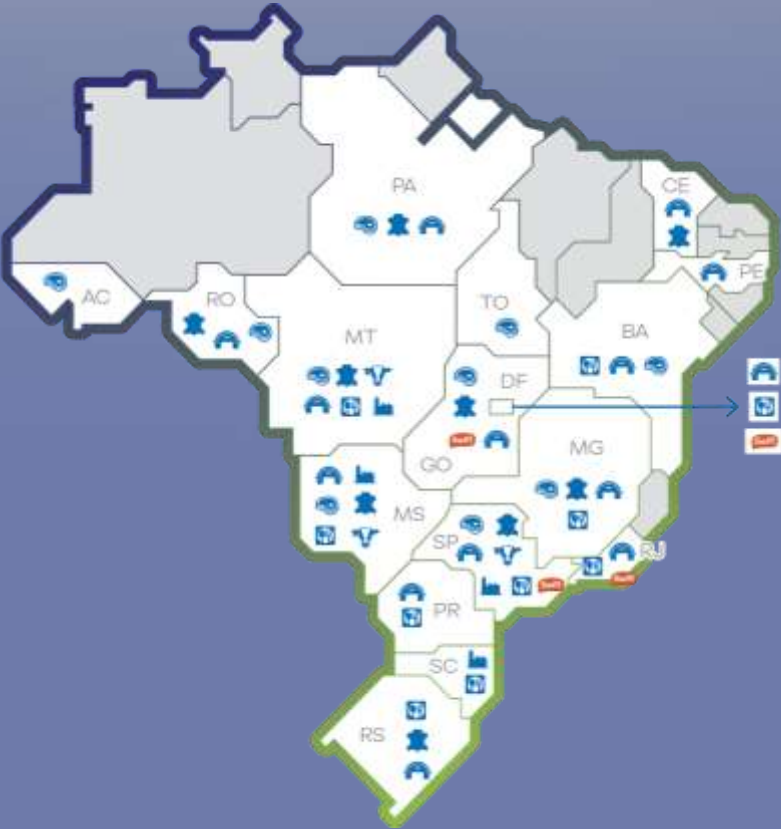
Includes purchase and sale between the sectors needed to meet demand increasing

.E.g.: fertilizer used in the production of corn used as feed.

Consumption
BRL 130,6 bi

Direct and indirect purchases by consumers and team members.

E.g.: Team members of JBS or companies engaged in the production chain expend their wages in local stores.



JBS BUSINESS IN BRAZIL



Beef protein and prepared food

Processing daily capacity



34
plants



32.600
Heads of cattle



41.000
employees



Prepared food and raw birds and swine

Production capacity



62
plants



Birds (per day) **5.1 MM**



Pork (per day) **26.600**



Prepared food (tons/
124.500
month)



95.000
Employee
s



Retail chain specialized in frozen proteins



1 plant



670 stores



4,000 employees



The greatest animal leather
processing company in the world



22 Plants in
the world

Production capacity

40.000
skins / day



7.500 employees



Transforms raw material into high
added value products



14
operations



Production capacity:
1.650 ton/year



6.000 employees



Couros

JBS COUROS



03
CONTINENTS

40k
SKINS/DAY

+7k
EMPLOYEES

22
FACILITIES

05
DISTRIBUTION CENTERS



LEGEND:

- Wet-blue
- Semi Acabado e Acabado
- Centros de Distribuição
- Showrooms
- Terminal Portuário

WET-BLUE (13)

- Brazil**
Cacoal/RO
Colíder - MT
Colorado do Oeste/RO
Barra do Garça/MT
Marabá/PA
Pedra Preta/MT
Naviraí/MS
Nova Andradina /MS
Porangatu/GO
São Luis de Montes Belos/GO
- Argentina**
Madalegna
- USA**
Cactus/TX

SEMI , CUT AND FINISHED (09)

- Brazil**
Cascavel/CE
Itumbiara/GO
Lins/SP
Uberlândia/MG
Montenegro/RS
- Uruguay**
Montevideo
- Argentina**
Madalegna
- Mexico**
Germany
- Germany**
Waldfischbach-Burgalben
- Italy**
Conceria Priante
- Vietnam**
Bien Hoa | Dong Nai

DISTRIBUTION CENTERS (5)

- Brazil**
Campo Grande/MS
- USA**
Hickory
- China
Dongguan
Hong Kong
- Italy**
Arzignano

PORT TERMINAL (1)

- Brazil**
Santos/SP

SHOWROOM (4)

- USA**
High Point
- Italy**
Conceria Priante
- Vietnam**
Bien Hoa | Dong Nai
- China**
Dongguan

PRODUCTION GLOBAL PLATFORM





HIGHLIGHTS

- BEGINNING OF OPERATIONS IN **2009**
- MORE THAN **7.500** EMPLOYEES
- UNITS STRATEGICALLY LOCATED
- PRODUCTION CAPACITY OF **40.000** SKINS/DAY
- 22 PRODUCTION UNITS AND 5 DISTRIBUTION CENTERS AROUND THE WORLD
- CLIENTS IN MORE THAN **50 COUNTRIES**



+

ZENDA



INTRODUCTION

MEMBER OF JBS GROUP
SINCE AUGUST 2013.

WET BLUE & CRUST PLANTS
BRAZIL, ARGENTINA AND USA.

AUTOMOTIVE FINISHING PLANT
URUGUAY – 40.000 SKINS/MONTH.

CUT PLANTS
URUGUAY, MEXICO AND GERMANY – 40.000
SKINS/MONTH.

DISTRIBUTION CENTERS
GERMANY AND MEXICO.

JBS GROUP PRESENCE
BRAZIL, USA, ITALY, CHINA, VIETNAM.

AUTOMOTIVE CLIENTS

TIER | SUPPLIER:



tesco



DRAXLMAIER

FORVIA
faurecia

Fehrer

ADIENT

Sněžka Národní

(JBS)
Carnon



ZENDA

ZENDA | URUGUAY PLANT



LEATHER FINISHING



AUTOMOTIVE LEATHER PORTFOLIO



RAW MATERIAL ORIGIN

- URUGUAY
- BRAZIL
- ARGENTINA
- USA

PRODUCTS

- CHROME LEATHER
- ROMO-FREE LEATHER
- VEGGIE/ZEOLITE

AUTOMOTIVE FINISHED ARTICLES

- NAPPA EXCLUSIVE
- NAPPA STANDARD
- FULL GRAIN EMBOSSSED
- CORRECTED GRAIN EMBOSSSED
- SPLIT EMBOSSSED

PROCESS

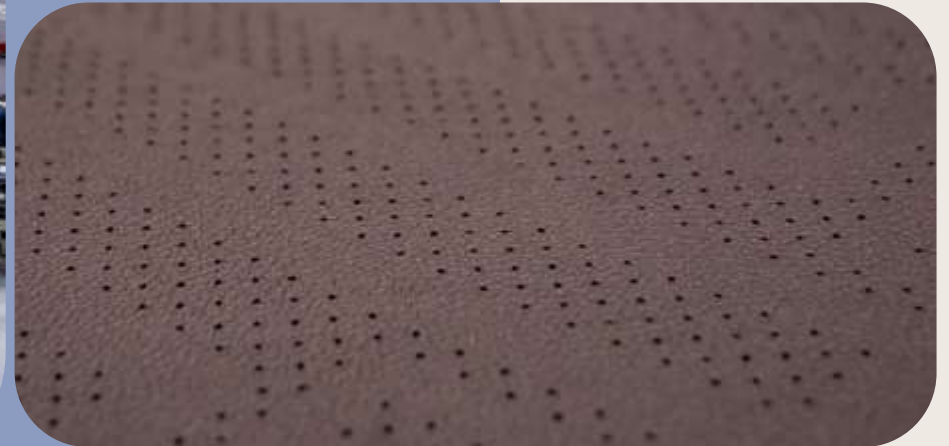
- REGULAR
- KIND LEATHER



CUT PARTS

DRILLING

21





LOGO ENGRAVING

DECORATIVE STITCHING



PERMANENT INNOVATION

RESEARCH CENTER OF TECHNOLOGIES FOR SEVERAL APPLICATIONS SUCH AS:

- LIGHT LEATHER
- FIREPROOF LEATHER
- ELIMINATION OF RESTRICTED SUBSTANCES (NMP, NEP,....)

DE R&D STRATEGIC PARTNERSHIP WITH BMW, VW E STELLANTIS.

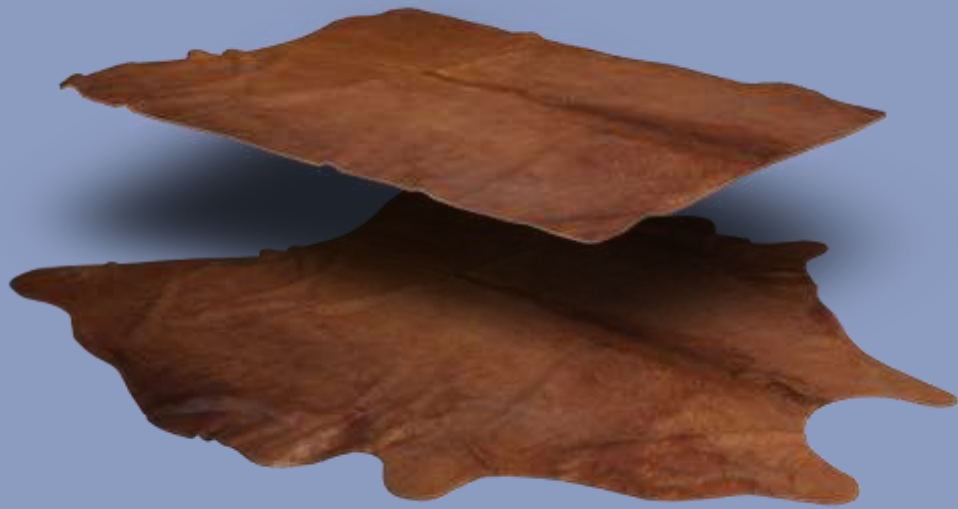
DEVELOPMENT OF NEW PROCESSES AND FORMULATIONS TO SUPPORT SUSTAINABILITY.

SPECIALISTS IN PRODUCTION LEATHER WITHOUT CHROME.



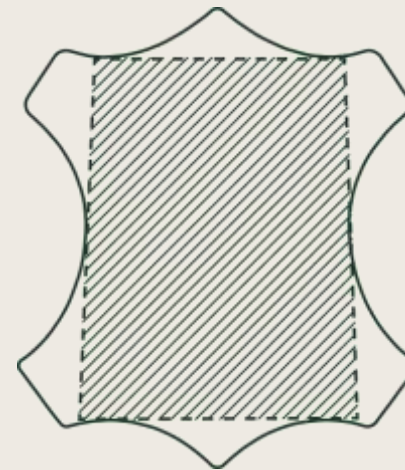
RESEARCH & DEVELOPMENT

- BREAK “ZERO”
- INFRARED CONTROL TECHNOLOGY
- EASY CLEAN TECHNOLOGY
- V-BLOCK TECHNOLOGY
- VEGGIE/ZEOLITE CRUST
- BIO BASED FINISHING



KIND LEATHER

- **RESOURCES SAVINGS**
- **DESTINATION TO FOOD AND PHARMACEUTICAL INDUSTRY**
- **IMPROVEMENT OF THE FINAL CUT EFFICIENCY**
- **LOWER WASTE GENERATION**





Couros